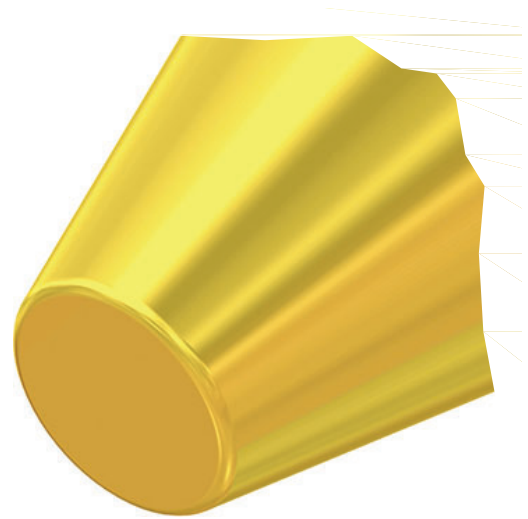
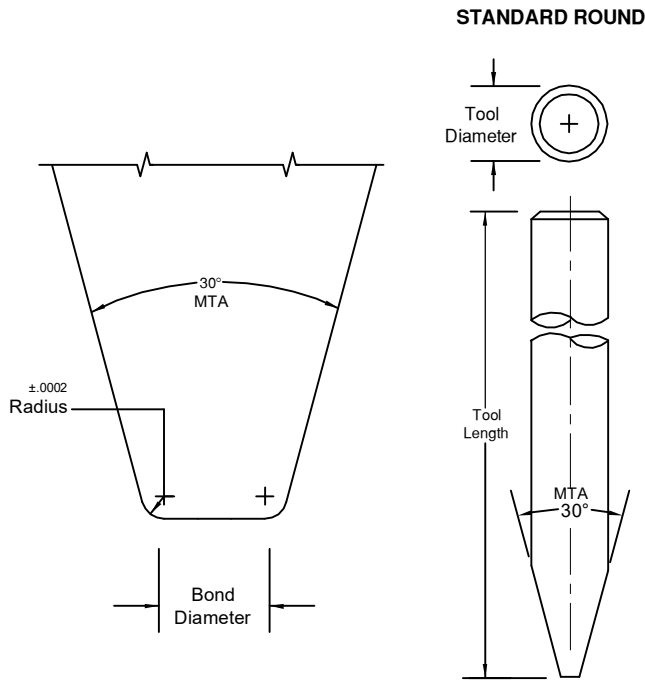


SERIES CT-107

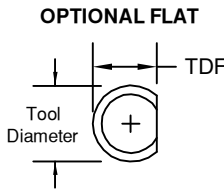
Conical Tip Tab Tool



For Standard Round specify TD only
For Optional Flat specify TD and TDF

MTA = MAIN TAPER ANGLE

Special dimensions available upon request.
Dimensions not shown please specify.
We recommend ceramic material for all gold wire bonding for optimum results.



	TD		TDF	
	in.	mm	in.	mm
1/16	.0624	1.59	.0460	1.17
	.0784	1.99	.0630	1.60
3/32	.0937	2.38	.0880	2.24
	.1180	3.00	.0985	2.50
1/8	.1249	3.17	.0937	2.38
1/8	.1249	3.17	.1180	3.00

SAMPLE PART NUMBER: M-CT-107-1/16-1-.001-M-C-*
SYMBOL EXPLANATION:

- | | | | | | | | | | |
|--|-------|---|-------|-------|-------|-------|-------|--|---|
| | 1 | 2 | 3 | 4 | 5 | 6 | 7 | 8 | 9 |
| 1. MATERIAL: | _____ | | _____ | _____ | _____ | _____ | _____ | _____ | 9. Tool Option:
Please specify MTA (Tool-Angle)
or see Tool Options |
| M = Ceramic
C = Tungsten Carbide
T = Titanium
All other: See Material Selection Guide | | | | | | | | | |
| 2. SERIES: CT | _____ | | _____ | _____ | _____ | _____ | _____ | 8. RADIUS: See Option Chart. | |
| 3. STYLE: 107 | _____ | | _____ | _____ | _____ | _____ | _____ | 7. FOOT FINISH:
M = Matte
P = Polished Radius | |
| 4. TOOL DIAMETER: Please specify | _____ | | _____ | _____ | _____ | _____ | _____ | 6. BOND DIAMETER: Please specify
(Includes 2/3 R) | |
| 5. TOOL LENGTH: Please specify | _____ | | _____ | _____ | _____ | _____ | _____ | | |

RADIUS OPTION CHART	OPTION LETTER		A	C	F	J
		RADIUS	in. μ	.0005 13	.0010 25	.0015 38